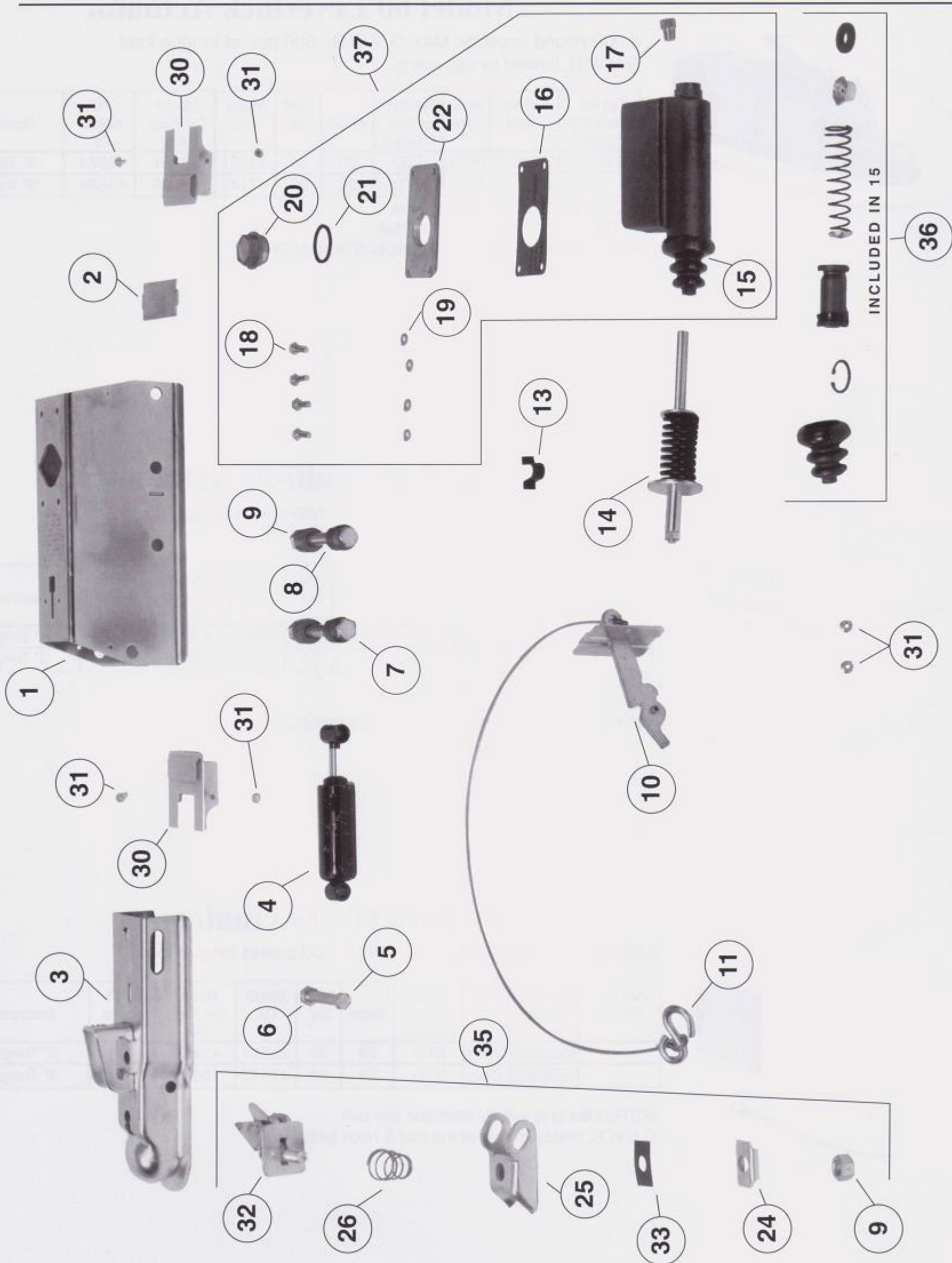


LEVER-LOCK  
MODEL 60 ACTUATOR DIAGRAM



LEVER-LOCK  
MODEL 60 ACTUATOR

REF. NO.	PART NO.	PART DESCRIPTION	MULTI-FIT MARINE 43397	MULTI-FIT PAINTED 43399	LEVER-LOCK MARINE 43329	LEVER-LOCK PAINTED 43386
1	4324600	Outer case	1		1	
1	4338700	Outer Case		1		1
2	2337700	Strut	1	1	1	1
3	2337800	Coupler Case	1			
3	4097000	Coupler Case		1		
3	4332500	Coupler Case			1	
3	4338800	Coupler Case				1
4	2336200	Shock Absorber	1	1	1	1
5	2339000	Bolt, Hex 7/16 NF X 2-5/8	1	1	1	1
6	2339100	Locknut, Hex 7/16 NF Thin	1	1	1	1
7	2327800	Roller	4	4	4	4
8	2341300	Bolt, Hex 1/2 NF X 3-3/4	2	2	2	2
9	1861200	Locknut, Hex 1/2 NF	2	2	3	3
10	4623800	Break-Away Assy. w/Pin, Cover, S-Hook	1	1	1	1
11	1055500	S-Hook - Included with 46238	1	1	1	1
13	4005200	Break-Away Spring	1	1	1	1
14	2346300	Push Rod Assembly	1	1	1	1
15	2336100	Master Cylinder - Drum Brake	1	1	1	1
15	4715200	Master Cylinder - Disc Brake	1	1	1	1
16	2341400	Gasket	1	1	1	1
17	1209800	Connector, 1-64" Orifice - Drum Brake	1	1	1	1
17	4750300	Connector - Disc Brake	1	1	1	1
18	1050800	Bolt, Hex 1/4 NC X 3/4	4	4	4	4
19	07994000	Lockwasher 1/4	4	4	4	4
20	4480701	Filler Cap, 1-1.4 - 18 NEF PLASTIC	1	1	1	1
21	2338900	Gasket, Filler Cap	1	1	1	1
22	2356600	Cover, Master Cylinder	1	1	1	1
23	2338100	Latch Bolt	1	1		
24	1809000	Lock Plate	1	1	1	1
25	4335800	Ball Latch	1	1	1	1
26	4336800	Spring	1	1	1	1
27	2338300	Hand Wheel Lock	1	1		
28	2420000	Hand Wheel	1	1		
29	2496400	Lock Ring	1	1		
30	245200	Cover, Front	2		2	
30	4097200	Cover, Front		2		2
31	1094100	Screw, Cover	6	6	6	6
32	4358500	Handle Assembly			1	1
33	4334500	Spring Plate			1	1
34	4045400	Multi-Fit Coupler Repair Kit	1	1		
35	4358400	Lever-Lock Coupler Repair Kit			1	1
36	1502600	Master Cylinder Repair Kit	1	1	1	1
37	4395100	Master cylinder Kit (includes * parts)	1	1	1	1

RECOMMENDED TOOLS

Socket and wrench sets  
Nut Drivers  
Torque wrench

Snap ring pliers  
Flat-blade screw driver